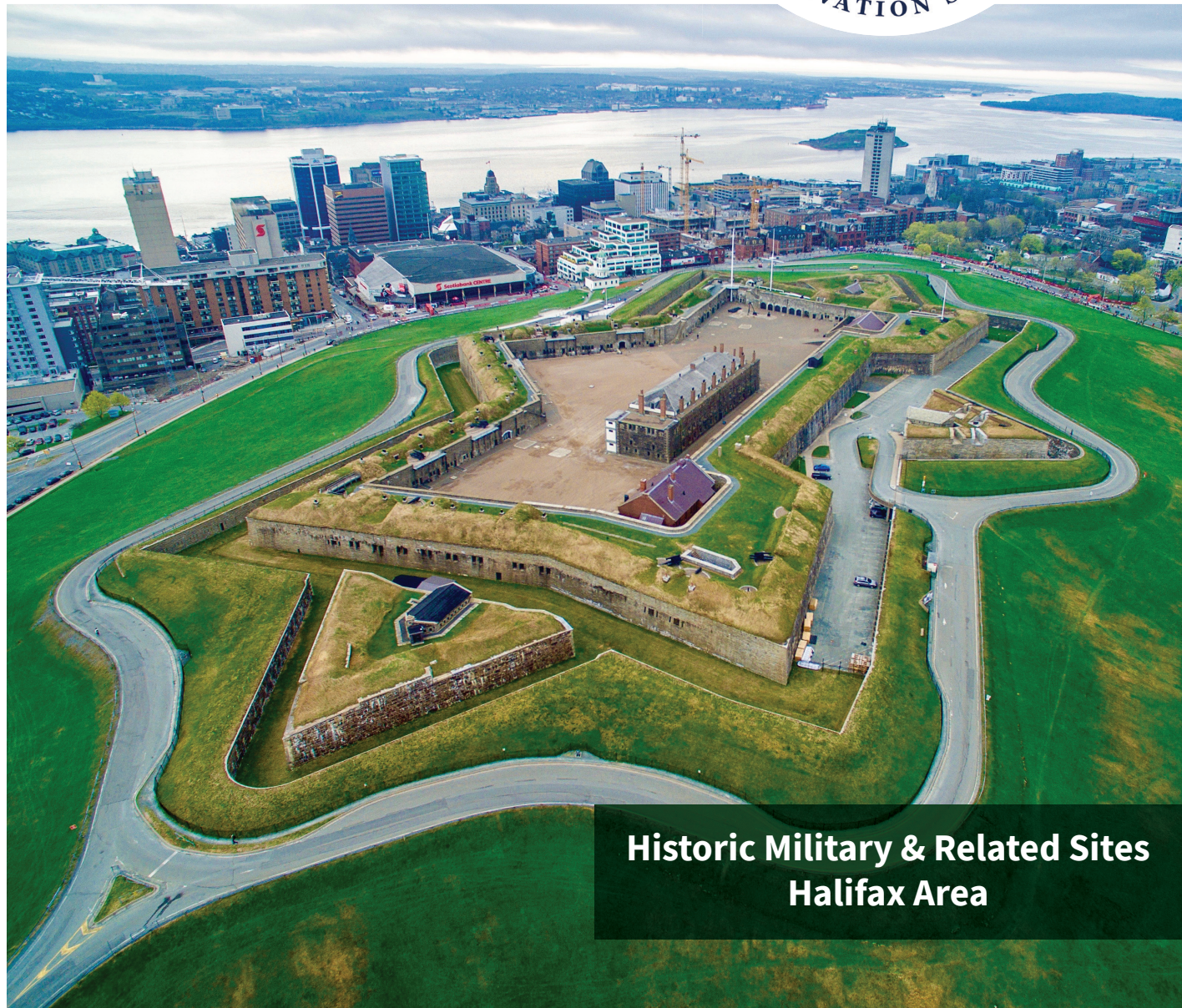




www.hmhps.ca



**Historic Military & Related Sites
Halifax Area**

National Historic Sites

The Citadel (1749)

Prince of Wales Tower (1790s)

York Redoubt (1790s)

Georges Island:

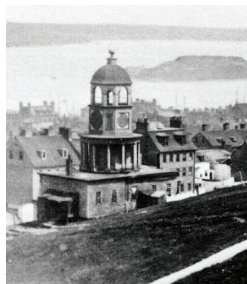
Fort Charlotte (1798)

McNabs Island:

Fort Ives/Ives Battery (1860s)

Fort McNab (1880s)

Fort Hugonin (1890s)



Peninsula

Grand Parade:

Cenotaph, St Paul's Anglican Church (1749)

Halifax Common

HMC Dockyard (1759)

Fort Needham (1776)

Royal Artillery Park (1797):

CO's Quarters, Officers' Mess, Cambridge Military Library, Single Officers Quarters, Married WOs Quarters, 9th Siege Battery Memorial

Point Pleasant Park:

Prince of Wales Tower, Fort Ogilvie, Cambridge Batteries, Sailors Memorial, Bonaventure Memorial, RAdm Walter Hose Memorial, Shannon-Chesapeake Memorial, Mi'kmaw cultural heritage area

Government House (1805)

CFB Halifax/Stadacona:

Naval Museum (Admiralty House 1819), Wellington Barracks (1850s), Naval Cemetery, Royal Canadian Regiment (RCR) Gate

The Armouries (1890s)

Cornwallis Park (1931)

Old Burying Ground (1749), including War of 1812 burials, Crimean War Memorial

Camp Hill & Camp Hill Cemetery (1844)

Fort Massey Cemetery (1770s)

Public Gardens (Boer War Statue)

Sackville Landing:

HMCs Sackville, Sailor Statue, Merchant Navy Memorial

Chebucto Landing:

Naval Dockyard Clock

Province House (1818):

Boer War Statue, 25th & 85th Battalions CEF plaques, War of 1812 cannons

Pier 21

Churchfield Barracks (12 Apostles Married Quarters), Brunswick Street

Public Archives of Nova Scotia

Central Library

Books of Remembrance with names of those who died in wars

Off Peninsula

Bedford Basin:

Duc D'Anville Encampment Monument (1746);

Fort Sackville (1750)

Melville Island & Deadman's Island Heritage Park

Burial Ground (1812)

Connaught Battery (WWI)

Sandwich Battery (WWI) part of York Redoubt complex

Remains of WW1 trenches and machine gun nest near Long Lake Provincial Park

Dartmouth/Eastern Passage

Eastern Battery (1754)/Fort Clarence (1794)

Baker's Point (WW I)/12 Wing Shearwater

Hartlen Point (WW II):

Devil's Battery, Elkins Barracks

